



**1118 Lexington Avenue**  
(SWC of 78th Street)



- SPACE:** Ground Floor – Approximately 910 square feet  
Basement – Approximately 650 square feet
- RENT:** Upon Request
- TERM:** Long Term
- POSSESSION:** Spring 2017
- DESCRIPTION:** Densely trafficked location. Neighbors include Lenox Hill Hospital, Butterfield Market, Starbucks, Juice Press, the Allen Stenevson School, the Hewitt School and the Birch Wathen School. Close proximity to the 6 Train.

**For inspection and further information, please call:**

**Stuart S. Ellman**  
Executive Director  
[stuartellman@judsonrealty.com](mailto:stuartellman@judsonrealty.com)

**Nicholas T. Judson**  
Director  
[njudson@judsonrealty.com](mailto:njudson@judsonrealty.com)

**Helene Wall Fagan**  
Executive Director  
[hwalfagan@judsonrealty.com](mailto:hwalfagan@judsonrealty.com)

**Tel. 212-974-1900**

ONE-HALF OF ONE FULL COMMISSION, in accordance with the rates currently in use and on file with Judson Realty, LLC when received from our principals, will be paid to the cooperating broker who consummates a lease which has been fully executed and delivered.

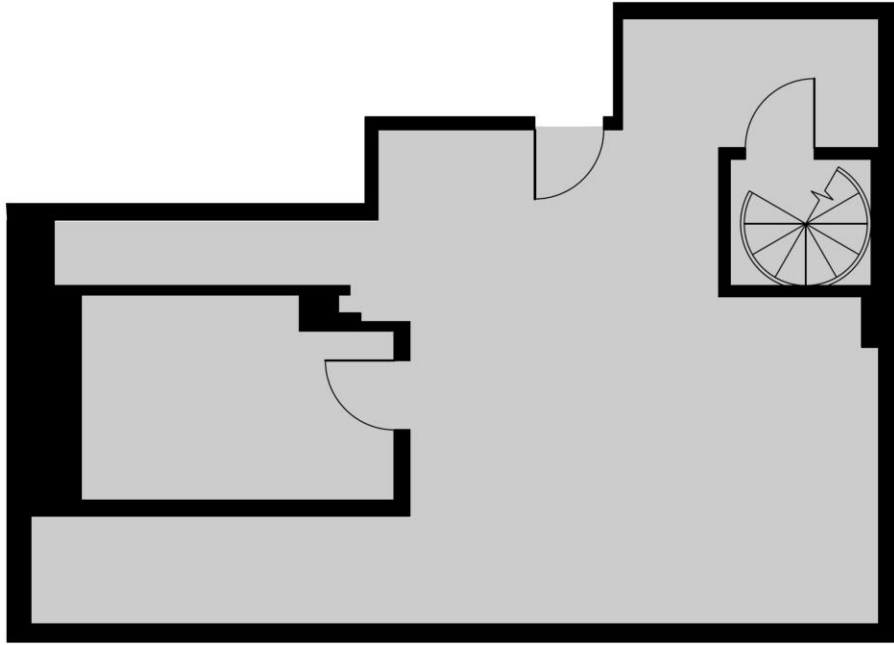
All information furnished with respect to the subject matter hereof has been obtained from sources deemed reliable. No representation or warranty as to the accuracy thereof is made and such information is submitted subject to errors, omissions, prior sale, change of price, rental or other conditions, or withdrawal without notice.



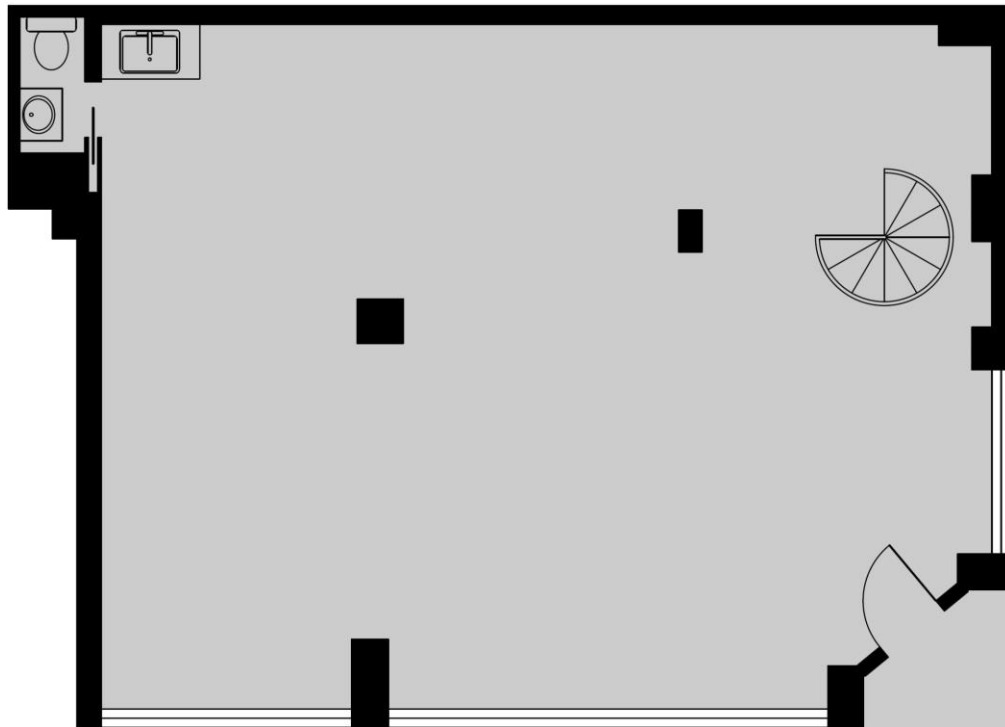
Judson Realty LLC, 145 East 57<sup>th</sup> Street, New York, New York 10022  
Tel 212-974-1900 Fax 212-586-6961

## 1118 Lexington Avenue – Floor Plan

Basement



Ground Floor



*Lexington Avenue*