

793 MADISON AVENUE

Nicholas Judson

Principal
njudson@judsoncre.com

Wendy McDonald

Associate
wmcdonald@judsoncre.com

Stuart Ellman

Executive Director
stuartellman@judsonrealty.com

Helene Wall Fagan

Senior Associate Broker
hwallfagan@judsonrealty.com

JUDSON CRE, LLC
654 MADISON AVENUE
NEW YORK, NY 10065
212.202.9200

JUDSON REALTY, LLC
131 EAST 70TH STREET, 2ND FLOOR
NEW YORK, NY 10021
212.974.1900

TABLE OF CONTENTS

INTRODUCTION	1
A UNIQUE OPPORTUNITY	3
MADISON AVENUE ENTRANCE	5
1ST FLOOR PLAN	7
FIRST FLOOR: CONCEPTUAL DESIGN	8
2ND FLOOR PLAN	9
SECOND FLOOR: PROPOSED ENTRY WITH DOUBLE-HEIGHT CEILING	10
3RD FLOOR PLAN	11
THIRD FLOOR: CONCEPTUAL DESIGN	12
4TH FLOOR, 5TH FLOOR, LOWER LEVEL: FLOOR PLANS	13
MULTI-LEVELS OF RETAIL SPACE WITH TALL CEILINGS	14
NEW REAR ADDITION	16
PRIME LOCATION	17
AREA MAP	19

INTRODUCTION

BUILDING

793 Madison Avenue
Built in 1881

ARCHITECTS

Thom and Wilson (1881)
Hoppin and Koen (1907)
Sawicki Tarella (2020)

DEVELOPER

Vanguard Construction & Development Co. Inc.
350 Fifth Avenue, NY, NY



Rising five stories, 793 Madison Avenue features a neo-Grec style.

Once completed in 2022, the building will offer 10,655 square feet of space with over 22 feet of frontage facing onto Madison Avenue.

793 Madison Avenue will be equipped with the latest energy efficient features such as Energy Recovery Ventilators, UV air purifiers, and VRF systems to minimize its carbon footprint.

The rear addition will also include a new elevator accessing all floors and a larger lobby with a separate entrance on 67th street.

A UNIQUE OPPORTUNITY

At 793 Madison Avenue, luxury brands will have a unique opportunity to occupy a flagship corner location on the Upper East Side in one of Manhattan's most distinguished retail corridors.

Originally designed by Thom and Wilson in 1881, the neo-Grec building was altered by Hoppin and Koen in 1907 and subsequently renovated with a two-story front extension.

793 Madison Avenue is slated to reopen in 2022 with a brand new rear addition, modified masonry openings, and expanded storefront windows and infill.



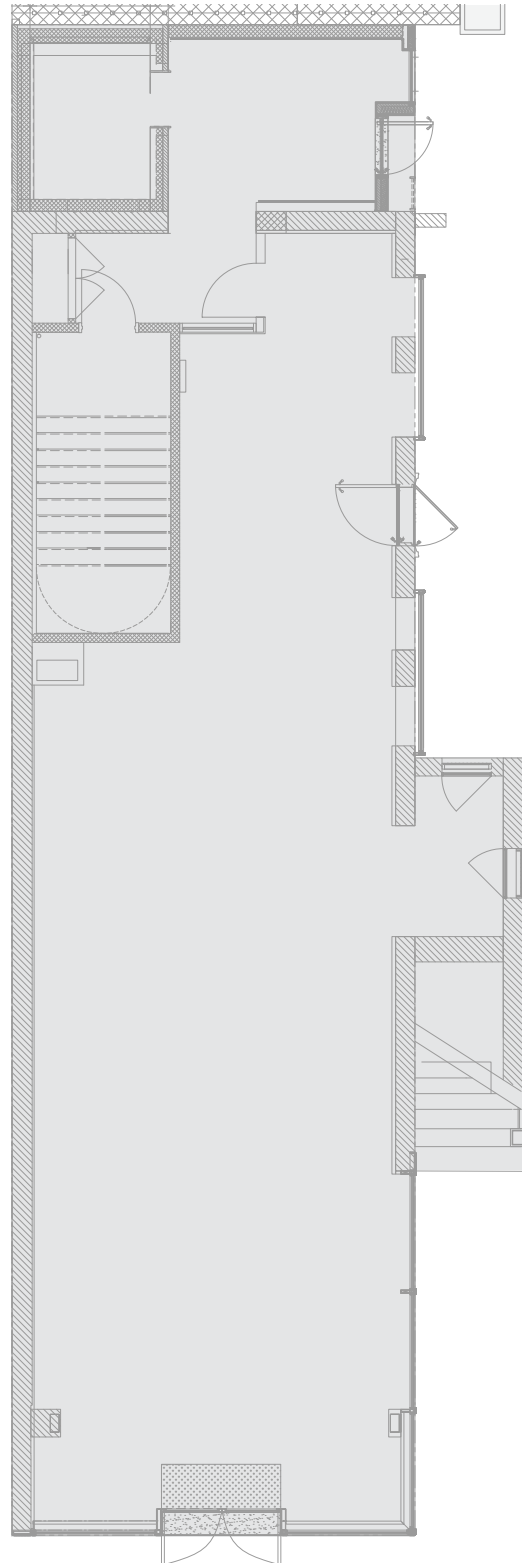
MADISON AVENUE ENTRANCE

Joseph Tarella, the renowned architect behind some of Madison Avenue's grandest buildings, has been commissioned to redesign the city's landmark 793 Madison Avenue.

Entering off Madison Avenue, visitors will experience the newly designed ground floor entryway with an open layout.



1ST FLOOR: FLOOR PLAN

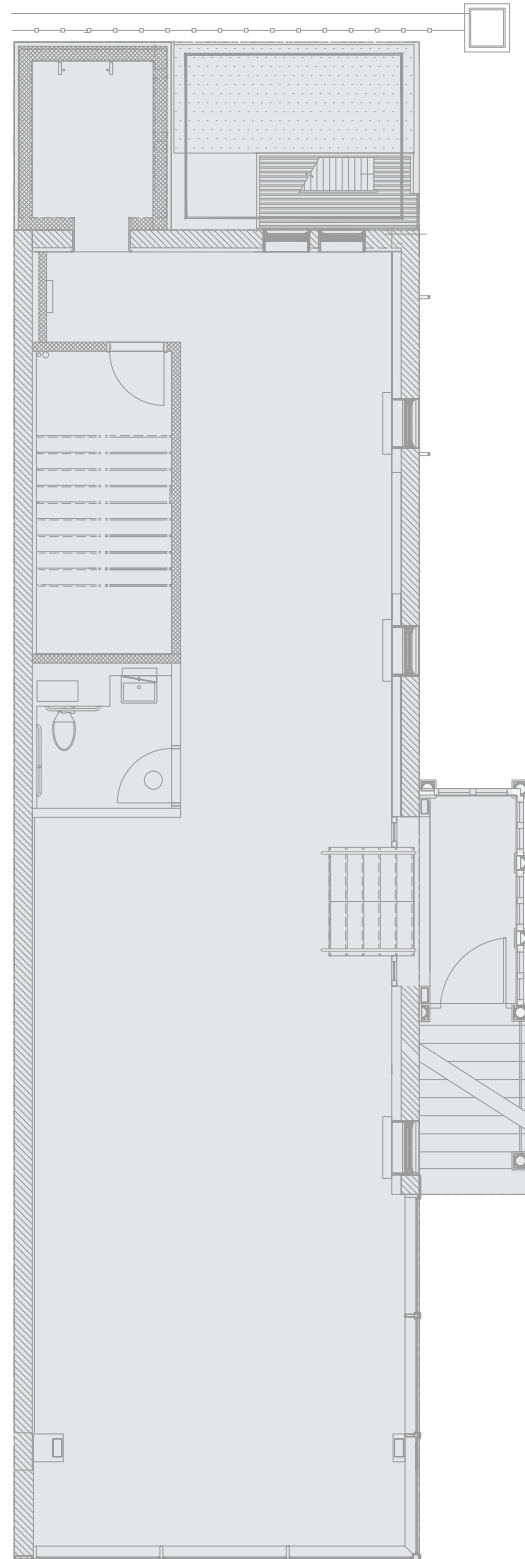


1ST FLOOR

FIRST FLOOR: CONCEPTUAL DESIGN



2ND FLOOR: FLOOR PLAN

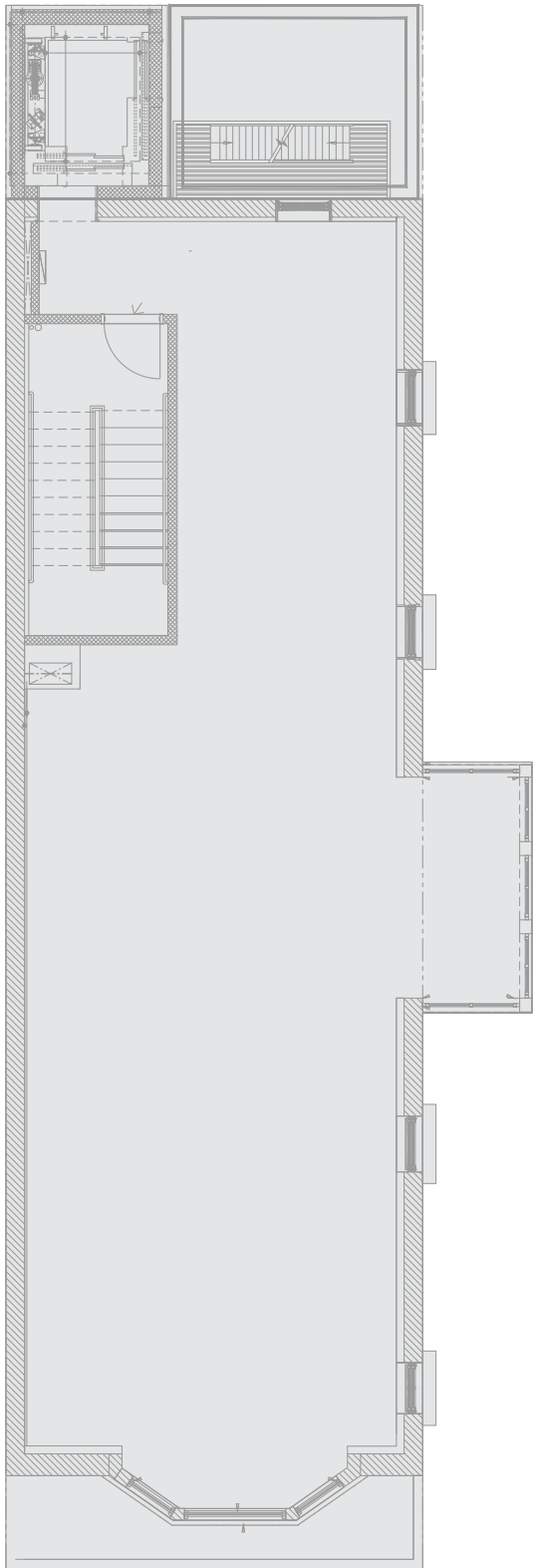


2ND FLOOR

SECOND FLOOR: PROPOSED ENTRY WITH DOUBLE-HEIGHT CEILING



3RD FLOOR: FLOOR PLAN

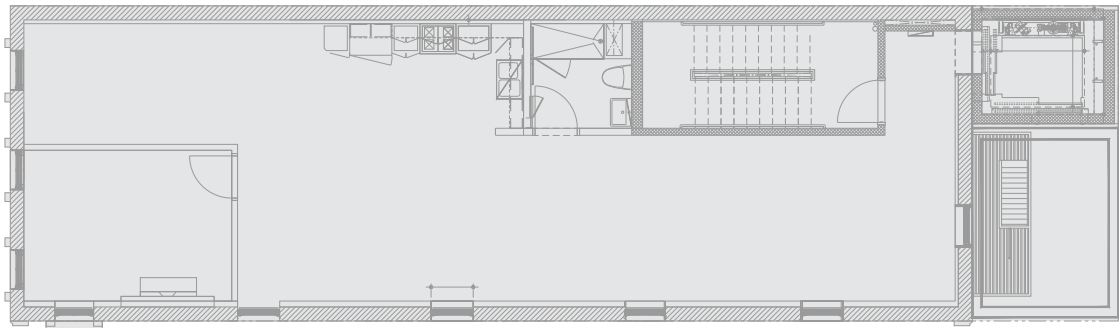


3RD FLOOR

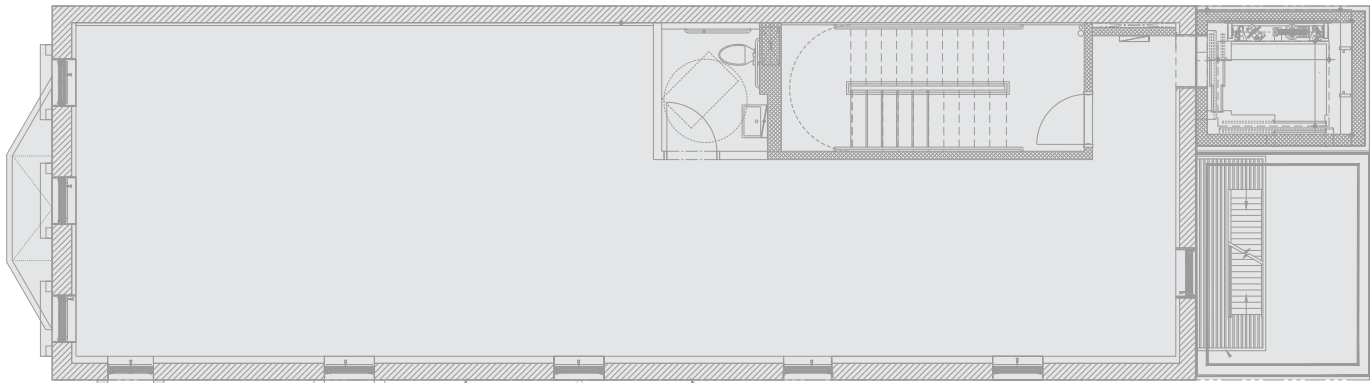
THIRD FLOOR: CONCEPTUAL DESIGN



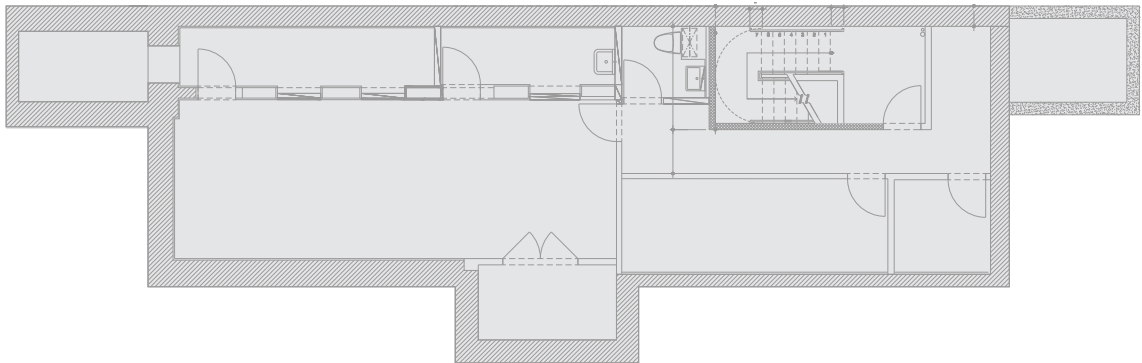
4TH FLOOR, 5TH FLOOR,
LOWER LEVEL: FLOOR PLANS



5TH FLOOR

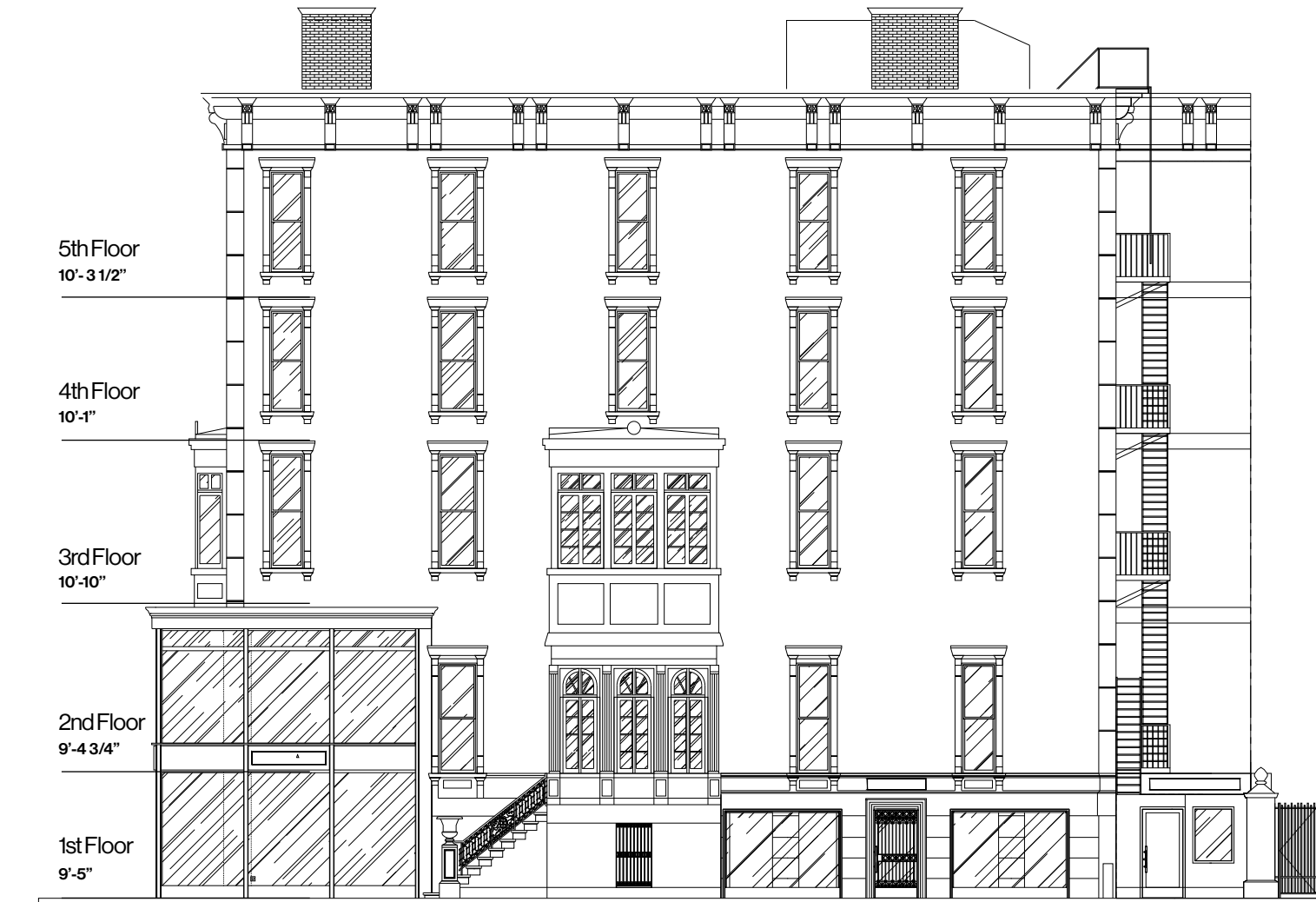


4TH FLOOR



LOWER LEVEL

MULTI-LEVELS OF
RETAIL SPACE WITH
TALL CEILINGS



5th Floor
1,629 SF

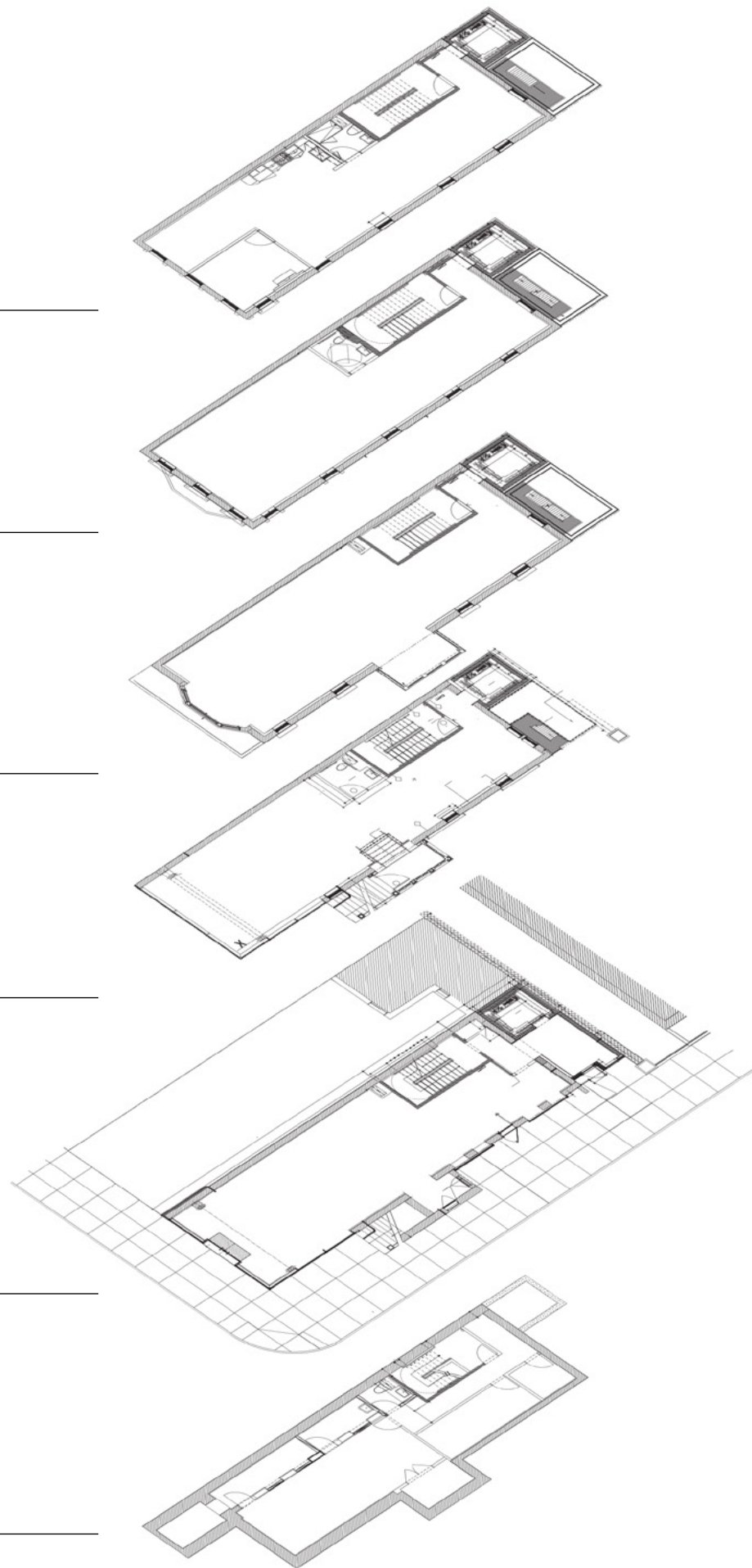
4th Floor
1,629 SF

3rd Floor
1,737 SF

2nd Floor
1,892 SF

1st Floor
2,027 SF

Lower level
1,741 SF



NEW REAR ADDITION

ELEVATOR ACCESSING EVERY FLOOR



PRIME LOCATION

MADISON AVENUE & 67TH STREET

Madison Avenue, on the tony Upper East Side of Manhattan, is North America's premier luxury district. It features the flagship boutiques of the finest fashion and jewelry designers, celebrated restaurants, spas and salons for exclusive pampering, four internationally renowned hotels, The Frick Madison Museum, and over one hundred galleries. This boulevard of understated charm is sure to entice your senses with indulgences from all corners of the globe.

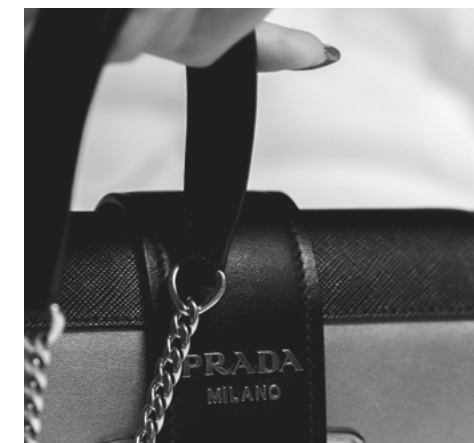
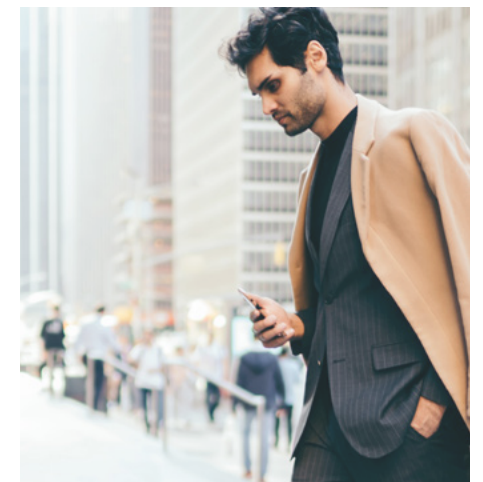
— **MADISON AVENUE BID**



D&G
DOLCE & GABBANA




LANVIN
PARIS



PRADA

AREA MAP

The building is situated among Madison Avenue's premiere high-end retail locales, restaurants and art galleries.

RETAIL

A. Lange & Sohne
Alexander McQueen
Chanel
Manolo Blahnik
Chloe
Longchamp
Graff
Buccellati
Bottega Veneta
Loro Piana
Le Labo

Giorgio Armani
Oscar de la Renta
Michael Kors
Creed Boutique
John Lobb
Carolina Herrera
Mackage
Dolce & Gabbana
The Row
Ralph Lauren Women's
Ralph Lauren Men's

Lanvin
Prada
Valentino
Monique Lhuillier
Akris
Isaia
Dennis Basso
Seaman Schepps
Anne Fontaine
Zadig & Voltaire
Elie Saab

Ippolita
J. Mendel
Kwiat
Eleventy
Roger Vivier
Versace
Pomellato
Etro
Beretta
De Beers
Panerai

RESTAURANTS

Match 65 Brasserie
Daniel
Altesi
Bar Italia
Avena
Ladurée
Ralph's Coffee
Le Charlot
Bel Ami Cafe

GALLERIES



Opera Gallery
Ippodo Gallery
Blum & Poe
Colnaghi
Hauser & Wirth
David Zwirner
Petzel Gallery
Didier Aaron
Di Donna

Central Park

5th Avenue

Madison Avenue

Park Avenue

Ralph's Coffee 
Ralph Lauren Women's 



 Ralph Lauren Men's

Ladurée 
Elie Saab 
The Row 

 Lanvin





 Prada
 Anne Fontaine
 Akris
 Le Charlot

 Colnaghi

Seaman Schepps 
Monique Lhuillier 

 Dolce & Gabbana  Hauser & Wirth  David Zwirner
 Dennis Basso
 Valentino
 Isaia
 Max Mara
 Michael Altman Fine Art




Mackage 

Carolina Herrera 
John Lobb 
Ippolita 
Creed 

 Bel Ami Cafe

 Petzel Gallery


67th Street


Michael Kors 
Blum & Poe 
Oscar de la Renta 

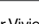
 Opera Gallery  Ippodo Gallery  Dieder Aron
 J. Mendel
 A. Lange & Shöne
 Kwait





Avena 
Bar Italia 



Giorgio Armani 

 Eleventy

 Match 65 Brasserie

Le Labo  Roger Vivier 
Loro Piana 
Bottega Veneta 

 Daniel
 Alexander McQueen
 Pomellato
 Chanel

Altesi 
Etro 
Buccellati 
De Beers 
Graff 

 Manolo Blahnik
 Chloé
 Longchamp

**793 MADISON
AVENUE**



**UPPER EAST SIDE
NEW YORK**

All information furnished with respect to the subject matter hereof has been obtained from sources deemed reliable. No representation or warranty as to the accuracy thereof is made and such information is submitted subject to errors, omissions, prior sale, change of price, rental or other conditions, or withdrawal without notice.